

SAL

FLEET LIST

Heavy Lift | Semi-Sub | Multipurpose



Heavy Lift

Type 183

2,000 t SWL

DP2 / SPS IP
HLV Lone 2011

DP1
HLV Svenja 2010



Deadweight	12,501 t
Cranes	2 × 1,000 t (combinable up to 2,000 t)
Max hold dimensions	107.10 × 17.00 × 13.50 m
Hold capacity	DP1: 18,470 m ³ DP2: 17,735 m ³
Free deckspace dim.	128.50 × 27.50 m
Free deckspace	DP1: 3,372 m ² DP2: 3,215 m ²
LOA/Beam	160.60 m / 27.91 m
Speed	20 knots

Orca

1,600 t SWL

Ice class 1A

HLV Elise 2025
HLV Frida 2025
HLV Patricia 2026
HLV Carlotta 2026
HLV Vera 2026



Deadweight	14,600 t
Cranes	2 × 800 t (combinable up to 1,600 t)
Max hold dimensions	107 × 18.5 × 13.3 m
Hold capacity	23,600 m ³
Free deckspace	3,330 m ²
LOA/Beam	149.90 m / 27.65 m
Speed	19 knots
Fuel readiness	Methanol (acc. future ISO/AWI 6583) after installation of pre-approved Methanol Module
Ice Class	1A Finnish Swedish

Type 176

1,400 t SWL

HLV Regine 2009
HLV Trina 2008
HLV Anne-Sofie 2008
HLV Frauke 2008



Deadweight	12,000 t
Cranes	2 × 700 t (combinable up to 1,400 t) + 1 × 350 t
Max hold dimensions	107.10 × 17.00 × 13.10 m
Hold capacity	19,299 m ³
Free deckspace dim.	128.00 × 24.00 m
Free deckspace	2,918 m ²
LOA/Beam	159.80 m / 24.34 m
Speed	20 knots

Type 116

900 t SWL

Ice class 1A

HLV Calypso 2011
HLV Amoenitas 2010
HLV Imke 2010
HLV Anna 2010
HLV Hilke 2010
HLV Caroline 2009



Deadweight	10,000 t
Cranes	2 × 450 t (combinable up to 900 t)
Max hold dimensions	94.25 × 16.20 × 12.08 m
Hold capacity	15,700 m ³
Free deckspace dim.	108.00 × 23.00 m
Free deckspace	2,311 m ²
LOA/Beam	133.00 m / 23.00 m
Speed	16 knots
Ice Class	DNV GL E3 equivalent to Finnish/Swedish 1A
Lakes Fitted	

Heavy Lift

Type 161B

700 t SWL

HLV Maria 2004
HLV Annette 2003



Deadweight	8,900 t
Cranes	2 × 350 t (combinable up to 700 t) + 1 × 250 t
Max hold dimensions	82.90 × 15.80 × 10.95 m
Hold capacity	13,604 m ³
Free deckspace dim.	124.00 × 20.50 m
Free deckspace	2,363 m ²
LOA/Beam	151.67 m / 21.02 m
Speed	20 knots

Type 161A

640 t SWL

HLV Wiebke 2000
HLV Paula 2000
HLV Annegret 2000
HLV Grietje 2000



Deadweight	9,370 t
Cranes	2 × 320 t (combinable up to 640 t) + 1 × 200 t
Max hold dimensions	82.90 × 15.80 × 10.97 m
Hold capacity	13,604 m ³
Free deckspace dim.	124.00 × 20.50 m
Free deckspace	2,329 m ²
LOA/Beam	151.67 m / 21.02 m
Speed	20 knots

Type 161

550 t SWL

HLV Annemieke 1998



Deadweight	9,544 t
Cranes	2 × 275 t (combinable up to 550 t) + 1 × 150 t
Max hold dimensions	82.90 × 15.80 × 11.17 m
Hold capacity	13,614 m ³
Free deckspace dim.	124.00 × 20.50 m
Free deckspace	2,329 m ²
LOA/Beam	151.67 m / 20.65 m
Speed	20 knots

Semi-Sub

Semi-Sub./ Deck Carrier

DP2

MV Zhong Ren 121 2022
MV Zhong Ren 122 2022



Deadweight	26,321 / 26,204 t
Free deckspace	5,300 m ²
Uniform deck load	25 t/m ²
LOA/Beam	169 m/39.80 m
Design draught	7.50 m
Max. submerg. draught	21.40 m
Max. water height above deck (subm.)	10.50 m
Speed	10 knots

Semi-Sub./ Deck Carrier

DP1

MV Alma 2012



Deadweight	24,629 t
Free deckspace	5,896 m ²
Uniform deck load	20 t/m ²
LOA/Beam	168.5 m/44 m
Design draught	7.10 m
Max. submerg. draught	17.80 m
Max. water height above deck (subm.)	7.50 m
Speed	9.5 knots

Semi-Sub./ Deck Carrier

MV Luisa 2008



Deadweight	17,113 t
Free deckspace	7,104 m ²
Uniform deck load	18 t/m ²
LOA/Beam	174 m/48 m
Design draught	5.40 m
Max. submerg. draught	15.29 m
Max. water height above deck (subm.)	5.04 m
Speed	9 knots

14K-700

700 t SWL

MPV Mila 2026
MPV Lina 2026
MPV Hannah 2026
MPV Pia 2026



Deadweight	14,300 t
Cranes	2 × 350 t (combinable up to 700 t)
Max hold dimensions	89.25 m × 17.60 m × 11.70 m
Cargo capacity	19,527.8 m ³ / 689,620 cbft Bale
Free deckspace	up to 3,032 m ²
Holds/Hatches	2 / 2
LOA/Beam	159.95 m / 22.80 m
Speed	abt. 15 knots
IMO fitted	Yes

12K-500

500 t SWL

MPV Sophie 2025
MPV Svend 2025
MPV Servant 2018
MPV Ind. Skipper 2016
MPV Ind. Song 2016
MPV Ind. Swift 2016



Deadweight	12,300 t
Cranes	2 × 250 t (combinable up to 500 t)
Max hold dimensions	76.50 m × 17.60 m × 11.70 m
Cargo capacity	17,600 m ³ / 621,538 cbft Bale
Free deckspace	up to 2,160 m ²
Holds/Hatches	2 / 2
LOA/Beam	147.00 m / 22.80 m
Speed	abt. 15 knots
IMO fitted	Yes

12K-360

360 t SWL

MPV RMS Fraternity 2008
MPV ABB Martha 2009



Deadweight	12,672 t
Cranes	2 × 180 t cranes (combinable up to 360 t)
Max hold dimensions	42.33 m × 17.50 m × 11.20 m
Cargo capacity	15,953 m ³ / 563,374 cbft Bale
Free deckspace	1,480 m ²
Holds/Hatches	3 / 3
LOA/Beam	138.07 m / 21.00 m
Speed	abt. 14 knots
IMO fitted	Yes

12K-300

300 t SWL

MPV Louise Auerbach 2007
MPV Ind. Katharina 2009
MPV Ind. Ursula 2008
MPV CPC Carolina 2007
MPV Eva 2008
MPV Ella 2007

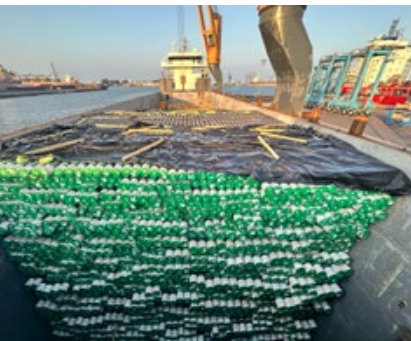


Deadweight	12,840 t
Cranes	2 × 150 t (combinable up to 300 t)
Max hold dimensions	42.00 m × 17.50 m × 11.18 m
Cargo capacity	14,891 m ³ / 525,870 cbft Bale
Free deckspace	1,486 m ²
Holds/Hatches	3 / 3
LOA/Beam	138.07 m / 21.00 m
Speed	abt. 13 knots
IMO fitted	Yes

10K-160

160 t SWL

MPV Ind. Momentum 2010
MPV Ind. Merchant 2013



Deadweight	10,029 t
Cranes	2 × 80 t (combinable up to 160 t)
Max hold dimensions	70.50 m × 17.20 m × 11.79 m
Cargo capacity	12,358 m ³ / 436,000 cbft Grain
Free deckspace	1,200 m ²
Holds/Hatches	1 / 1
LOA/Beam	116.26 m / 17.80 m
Speed	abt. 14 knots
IMO fitted	Yes

8K-500

500 t SWL

MPV Ind. Diamond 2006
MPV Ind. Destiny 2006
MPV Ind. Dolphin 2007
MPV Ind. Dream 2007
MPV Ind. Dawn 2007
MPV Ind. Dart 2008



Deadweight	8,034 t
Cranes	2 × 250 t (combinable up to 500 t)
Max hold dimensions	38.38 m × 15.77 m × 12.19 m
Cargo capacity	10,532 m ³ / 371,934 cbft Bale
Free deckspace	1,083 m ²
Holds/Hatches	3 / 3
LOA/Beam	119.80 m / 20.00 m
Speed	abt. 15 knots
IMO fitted	Yes

8K-400

400 t SWL

MPV Ind. Challenger 2000
MPV Ind. Charger 2000



Deadweight	8,034 t
Cranes	2 × 200 t (combinable up to 400 t)
Max hold dimensions	72.25 m × 16.25 m × 5.36 m
Cargo capacity	10,532 m ³ / 371,934 cbft Bale
Free deckspace	1,133 m ²
Holds/Hatches	3 / 1
LOA/Beam	119.80 m / 20.00 m
Speed	abt. 16 knots
IMO fitted	Yes

8K-300

300 t SWL

MPV Ind. Color 2019
MPV Ind. Confidence 2018
MPV Ind. Constant 2018
MPV Ind. Courage 2018



Deadweight	8,500 t
Cranes	2 × 150 t (combinable up to 300 t)
Max hold dimensions	60.90 m × 15.30 m × 12.10 m
Cargo capacity	10,228 m ³ / 361,198 cbft Bale
Free deckspace	927.59 m ²
Holds/Hatches	1 / 1
LOA/Beam	99.99 m / 20.50 m
Speed	abt. 13.5 knots
IMO fitted	Yes

8K-120

120 t SWL

MPV Ind. Hobart 2006



Deadweight	7,778 t
Cranes	2 × 60 t (combinable up to 120 t)
Max hold dimensions	54.00 m × 12.65 m × 9.45 m
Cargo capacity	9,414 m ³ / 332,452 cbft Bale
Free deckspace	1,024 m ²
Holds/Hatches	2 / 2
LOA/Beam	118.55 m / 15.20 m
Speed	abt. 14.7 knots
IMO fitted	No

6K-120/160

120/160 t SWL

MPV Ind. Ace 1999
MPV Ind. Ama 1998
MPV Ind. Aim 1999



Deadweight	6,288 t
Cranes	2 × 60 t (combinable up to 120 t) Ind. Ace / Ind. Ama 2 × 80 t (combinable up to 160 t) Ind. Aim
Max hold dimensions	58.10 m × 14.00 m × 9.00 m
Cargo capacity	6,622 m ³ / 233,853 cbft Bale
Free deckspace	1,076 m ²
Holds/Hatches	1 / 1
LOA/Beam	99.98 m / 17.00 m
Speed	abt. 13.5 knots
IMO fitted	Yes